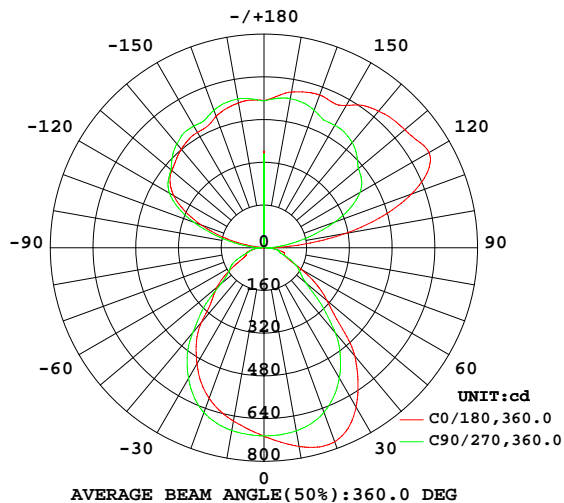


## LUMINAIRE PHOTOMETRIC TEST REPORT

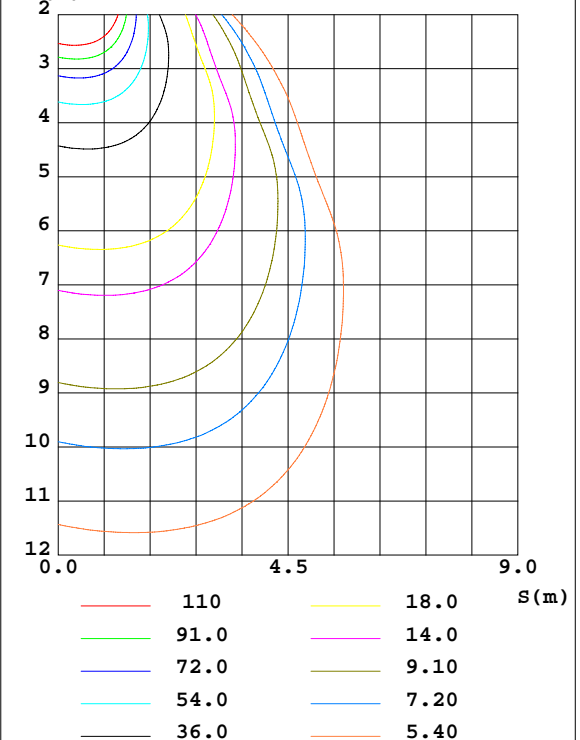
Test:U:229.79V I:0.1300A P:28.361W PF:0.9496 Freq:49.99Hz Lamp Flux:3840.09x1 lm		
NAME:	TYPE:	WEIGHT:
SPEC.:	DIM.: 600*203*10	SERIAL No.:
MFR.:	SUR.:0.58*0.122	Shielding Angle:

DATA OF LAMP		PHOTOMETRIC DATA Eff: 135.40 lm/W			
MODEL		Imax(cd)	775.9	S/MH(C0/180)	1.09
NOMINAL POWER(W)	30	LOR(%)	100.0	S/MH(C90/270)	1.19
RATED VOLTAGE(V)	230.0	TOTAL FLUX(lm)	3840.1	$\eta$ UP,DN(C0-180)	31.1,19.3
NOMINAL FLUX(lm)	3840.09	CIE CLASS	SEMI-IND.	$\eta$ UP,DN(C180-360)	30.4,19.2
LAMPS INSIDE	1	$\eta$ up(%)	61.5	CIBSE SHR NOM	1.25
TEST VOLTAGE(V)	230.0	$\eta$ down(%)	38.5	CIBSE SHR MAX	1.25

LUMINOUS INTENSITY DISTRIBUTION DIAGRAM



C0 PLANE ISOLUX DIAGRAM (UNIT:lx)



C Range: 0 - 360DEG  
C Interval: 5.0DEG  
Test Speed: MEDIUM  
Temperature:25.3DEG  
Operators:  
Test Date:2026-01-17

$\gamma$  Range: 0 - 180DEG  
 $\gamma$  Interval: 0.5DEG  
Test System:EVERFINE GO-2000\_V1 SYSTEM V2.0.406.10  
Humidity:65.0%  
Test Distance:11.700m [K=0.8547]  
Remarks:

## ZONAL FLUX DIAGRAM

## ZONAL FLUX DIAGRAM:

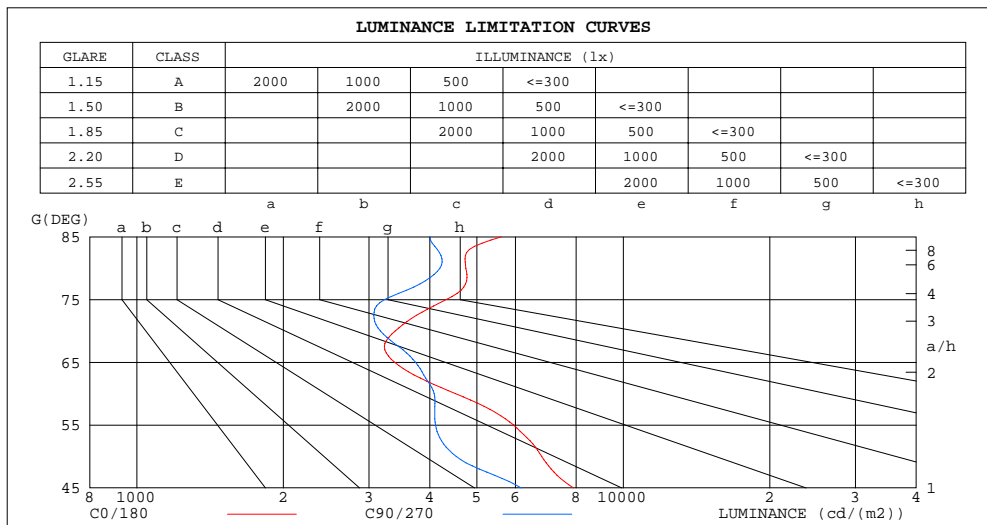
$\gamma$	C0	C45	C90	C135	C180	C225	C270	C315	$\gamma$	$\Phi$ zone	$\Phi$ total	$\Phi$ lum, lamp
10	755.6	723.5	696.8	672.0	659.1	670.9	695.0	722.2	0- 10	66.97	66.97	1.74,1.74
20	773.4	707.2	656.3	617.4	600.3	618.0	657.2	707.9	10- 20	193.9	260.9	6.79,6.79
30	689.8	619.1	564.1	521.1	501.7	521.7	565.1	619.8	20- 30	288.0	548.8	14.3,14.3
40	528.8	464.6	415.8	379.6	363.9	378.7	414.3	463.5	30- 40	315.9	864.7	22.5,22.5
50	309.0	241.8	206.2	212.9	230.1	216.1	211.4	245.6	40- 50	247.8	1112	29,29
60	159.9	153.9	144.5	127.4	115.9	127.3	144.3	153.7	50- 60	163.6	1276	33.2,33.2
70	82.21	79.49	76.63	72.35	70.49	77.08	84.20	85.17	60- 70	105.2	1381	36,36
80	58.32	55.15	51.56	46.54	43.10	44.94	49.00	53.23	70- 80	67.92	1449	37.7,37.7
90	10.91	7.344	4.570	2.267	1.400	3.502	6.546	8.826	80- 90	30.26	1479	38.5,38.5
100	309.5	194.4	117.4	82.70	77.14	83.03	117.9	194.8	90-100	69.07	1549	40.3,40.3
110	587.3	400.6	282.1	244.8	249.5	243.1	279.4	398.6	100-110	251.1	1800	46.9,46.9
120	713.4	530.3	415.4	383.1	390.4	378.9	408.5	525.1	110-120	401.8	2201	57.3,57.3
130	688.3	548.3	462.0	441.8	450.5	437.3	454.8	542.9	120-130	435.6	2637	68.7,68.7
140	668.0	575.7	514.0	486.8	482.0	482.8	507.5	570.9	130-140	401.0	3038	79.1,79.1
150	616.1	565.9	529.7	507.3	499.1	504.9	525.8	563.0	140-150	338.8	3377	87.9,87.9
160	608.9	574.5	548.9	531.6	524.7	531.1	548.2	573.9	150-160	249.8	3627	94.4,94.4
170	592.1	578.8	567.5	556.7	550.9	555.8	566.0	577.7	160-170	159.6	3786	98.6,98.6
180	551.1	551.1	551.1	551.1	551.1	551.1	551.1	551.1	170-180	53.82	3840	100,100
DEG	LUMINOUS INTENSITY:cd									UNIT:lm		

C Range: 0 - 360DEG  
 C Interval: 5.0DEG  
 Test Speed: MEDIUM  
 Temperature:25.3DEG  
 Operators:  
 Test Date:2026-01-17

$\gamma$  Range: 0 - 180DEG  
 $\gamma$  Interval: 0.5DEG  
 Test System:EVERFINE GO-2000\_V1 SYSTEM V2.0.406.10  
 Humidity:65.0%  
 Test Distance:11.700m [K=0.8547]  
 Remarks:

## LUMINANCE LIMITATION CURVES

Test:U:229.79V I:0.1300A P:28.361W PF:0.9496 Freq:49.99Hz Lamp Flux:3840.09x1 lm		
NAME:	TYPE:	WEIGHT:
SPEC.:	DIM.: 600*203*10	SERIAL No.:
MFR.:	SUR.:0.58*0.122	Shielding Angle:



LUMINANCE cd/(m2)		
G(DEG)	C0/180	C90/270
85	5615	4011
80	4746	4196
75	4324	3228
70	3397	3166
65	3390	3740
60	4521	4085
55	5950	4111
50	6793	4534
45	7897	6165

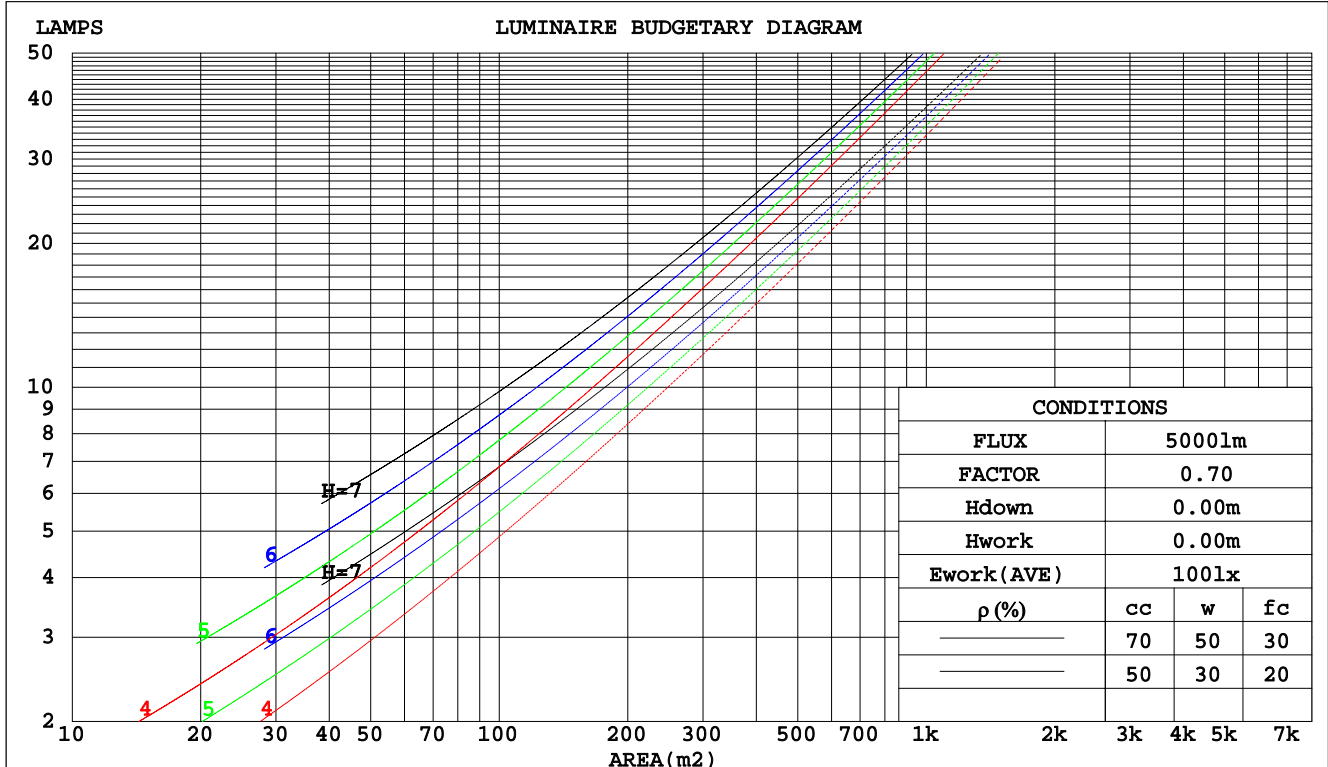
C Range: 0 - 360DEG  
C Interval: 5.0DEG  
Test Speed: MEDIUM  
Temperature:25.3DEG  
Operators:  
Test Date:2026-01-17

$\gamma$  Range: 0 - 180DEG  
 $\gamma$  Interval: 0.5DEG  
Test System:EVERFINE GO-2000\_V1 SYSTEM V2.0.406.10  
Humidity:65.0%  
Test Distance:11.700m [K=0.8547]  
Remarks:

## CU AND LUMINAIRE BUDGETARY ESTIMATE DIAGRAM

Test:U:229.79V I:0.1300A P:28.361W PF:0.9496 Freq:49.99Hz Lamp Flux:3840.09x1 lm		
NAME:	TYPE:	WEIGHT:
SPEC.:	DIM.: 600*203*10	SERIAL No.:
MFR.:	SUR.:0.58*0.122	Shielding Angle:

pcc	80%			70%			50%			30%			10%			0
pw	50%	30%	10%	50%	30%	10%	50%	30%	10%	50%	30%	10%	50%	30%	10%	0
pfc	20%			20%			20%			20%			20%			0
RCR	RCR:Room Cavity Ratio			Coefficients of Utilization(CU)												
0.0	1.04	1.04	1.04	.95	.95	.95	.77	.77	.77	.61	.61	.61	.46	.46	.46	.39
1.0	.91	.88	.85	.83	.80	.77	.68	.66	.64	.54	.52	.51	.41	.40	.39	.33
2.0	.80	.75	.70	.73	.69	.64	.60	.57	.54	.48	.46	.44	.37	.35	.34	.29
3.0	.71	.64	.59	.65	.59	.54	.54	.49	.46	.43	.40	.37	.33	.31	.29	.25
4.0	.63	.56	.50	.58	.52	.47	.48	.43	.39	.39	.35	.33	.30	.28	.26	.22
5.0	.57	.49	.43	.52	.45	.40	.43	.38	.34	.35	.31	.29	.27	.25	.23	.19
6.0	.51	.43	.38	.47	.40	.35	.39	.34	.30	.32	.28	.25	.25	.22	.20	.17
7.0	.46	.39	.33	.43	.36	.31	.36	.30	.27	.29	.25	.23	.23	.20	.18	.16
8.0	.42	.35	.30	.39	.32	.28	.32	.27	.24	.27	.23	.20	.21	.19	.17	.14
9.0	.38	.31	.26	.35	.29	.25	.30	.25	.22	.25	.21	.18	.20	.17	.15	.13
10.0	.35	.28	.24	.33	.26	.22	.28	.23	.19	.23	.19	.17	.18	.16	.14	.12



C Range: 0 - 360DEG  
C Interval: 5.0DEG  
Test Speed: MEDIUM  
Temperature:25.3DEG  
Operators:  
Test Date:2026-01-17

γ Range: 0 - 180DEG  
γ Interval: 0.5DEG  
Test System:EVERFINE GO-2000\_V1 SYSTEM V2.0.406.10  
Humidity:65.0%  
Test Distance:11.700m [K=0.8547]  
Remarks:

## WEC AND CCEC

Test:U:229.79V I:0.1300A P:28.361W PF:0.9496 Freq:49.99Hz Lamp Flux:3840.09x1 lm								
NAME:			TYPE:			WEIGHT:		
SPEC.:			DIM.: 600*203*10			SERIAL No.:		
MFR.:			SUR.:0.58*0.122			Shielding Angle:		

pcc	80%			70%			50%			30%			10%			0
pw	50%	30%	10%	50%	30%	10%	50%	30%	10%	50%	30%	10%	50%	30%	10%	0
pfc	20%			20%			20%			20%			20%			0
RCR	RCR:Room Cavity Ratio						Wall Exitance Coefficients(WEC)									
0.0																
1.0	.264	.150	.048	.239	.136	.043	.191	.110	.035	.147	.085	.027	.107	.062	.020	
2.0	.245	.134	.041	.221	.122	.038	.178	.099	.031	.138	.077	.024	.101	.057	.018	
3.0	.226	.121	.036	.205	.110	.033	.165	.090	.027	.128	.070	.022	.094	.052	.016	
4.0	.210	.109	.032	.191	.100	.029	.154	.082	.024	.120	.064	.019	.088	.048	.015	
5.0	.196	.100	.029	.178	.091	.027	.144	.075	.022	.112	.059	.018	.083	.044	.013	
6.0	.182	.091	.026	.166	.084	.024	.135	.069	.020	.105	.055	.016	.078	.041	.012	
7.0	.171	.084	.024	.155	.077	.022	.126	.064	.018	.099	.051	.015	.073	.038	.011	
8.0	.160	.078	.022	.146	.072	.020	.119	.059	.017	.093	.047	.014	.069	.036	.010	
9.0	.151	.073	.020	.138	.067	.019	.112	.055	.016	.088	.044	.013	.066	.033	.010	
10.0	.142	.068	.019	.130	.063	.018	.106	.052	.015	.084	.042	.012	.062	.031	.009	

pcc	80%			70%			50%			30%			10%			0
pw	50%	30%	10%	50%	30%	10%	50%	30%	10%	50%	30%	10%	50%	30%	10%	0
pfc	20%			20%			20%			20%			20%			0
RCR	RCR:Room Cavity Ratio						Ceiling Cavity Exitance Coefficients(CCEC)									
0.0	.659	.659	.659	.563	.563	.563	.384	.384	.384	.221	.221	.221	.071	.071	.071	
1.0	.649	.629	.610	.556	.540	.525	.380	.371	.363	.219	.215	.211	.070	.069	.068	
2.0	.641	.608	.579	.549	.523	.501	.376	.362	.349	.217	.210	.205	.070	.068	.067	
3.0	.634	.592	.558	.544	.511	.484	.373	.355	.340	.216	.207	.200	.069	.067	.066	
4.0	.627	.580	.544	.538	.501	.473	.370	.349	.333	.214	.205	.197	.069	.067	.065	
5.0	.621	.571	.534	.533	.494	.465	.367	.345	.328	.213	.203	.195	.069	.066	.064	
6.0	.615	.564	.527	.529	.488	.459	.365	.342	.325	.212	.201	.193	.068	.066	.064	
7.0	.609	.558	.521	.524	.483	.454	.362	.339	.322	.210	.200	.192	.068	.065	.063	
8.0	.604	.553	.517	.520	.479	.451	.360	.336	.320	.209	.199	.191	.068	.065	.063	
9.0	.599	.548	.514	.516	.476	.448	.357	.334	.318	.208	.198	.190	.067	.065	.063	
10.0	.594	.545	.512	.512	.473	.446	.355	.333	.317	.207	.197	.189	.067	.065	.063	

C Range: 0 - 360DEG  
C Interval: 5.0DEG  
Test Speed: MEDIUM  
Temperature:25.3DEG  
Operators:  
Test Date:2026-01-17

γ Range: 0 - 180DEG  
γ Interval: 0.5DEG  
Test System:EVERFINE GO-2000\_V1 SYSTEM V2.0.406.10  
Humidity:65.0%  
Test Distance:11.700m [K=0.8547]  
Remarks:

## UGR(Unified Glare Rating) Table

Test:U:229.79V I:0.1300A P:28.361W PF:0.9496 Freq:49.99Hz Lamp Flux:3840.09x1 lm											
NAME:			TYPE:			WEIGHT:					
SPEC.:			DIM.: 600*203*10			SERIAL No.:					
MFR.:			SUR.:0.58*0.122			Shielding Angle:					
ceiling/cavity	0.7	0.7	0.5	0.5	0.3	0.7	0.7	0.5	0.5	0.3	
walls	0.5	0.3	0.5	0.3	0.3	0.5	0.3	0.5	0.3	0.3	
working plane	0.2	0.2	0.2	0.2	0.2	0.2	0.2	0.2	0.2	0.2	
Room dimensions		Viewed crosswise				Viewed endwise					
x = 2H y = 2H	14.0	14.8	15.0	15.8	17.0	13.1	13.9	14.0	14.8	16.1	
	3H	14.5	15.3	15.5	16.2	17.5	13.8	14.6	14.8	15.6	16.8
	4H	15.0	15.7	16.0	16.7	18.0	14.2	14.9	15.2	15.9	17.2
	6H	15.6	16.2	16.6	17.2	18.6	14.8	15.4	15.8	16.4	17.7
	8H	15.8	16.4	16.9	17.4	18.8	15.0	15.6	16.0	16.6	17.9
	12H	16.0	16.6	17.1	17.6	19.0	15.1	15.7	16.2	16.7	18.1
4H	2H	14.0	14.7	15.0	15.7	17.0	13.3	13.9	14.3	14.9	16.2
	3H	14.7	15.3	15.8	16.3	17.7	14.2	14.8	15.2	15.8	17.1
	4H	15.4	15.9	16.4	16.9	18.3	14.7	15.2	15.8	16.2	17.6
	6H	16.2	16.7	17.3	17.7	19.1	15.5	15.9	16.5	17.0	18.4
	8H	16.5	16.9	17.6	18.0	19.4	15.8	16.2	16.9	17.3	18.7
	12H	16.8	17.2	17.9	18.3	19.7	16.0	16.4	17.1	17.4	18.9
8H	4H	15.5	15.9	16.6	17.0	18.4	14.9	15.3	16.0	16.4	17.8
	6H	16.5	16.9	17.6	18.0	19.4	15.9	16.2	17.0	17.3	18.8
	8H	17.0	17.3	18.1	18.4	19.8	16.3	16.6	17.4	17.7	19.2
	12H	17.4	17.6	18.5	18.7	20.2	16.7	16.9	17.8	18.0	19.5
12H	4H	15.5	15.9	16.6	16.9	18.4	14.9	15.3	16.0	16.3	17.8
	6H	16.6	16.9	17.7	18.0	19.4	16.0	16.3	17.1	17.4	18.8
	8H	17.1	17.3	18.2	18.4	19.9	16.5	16.7	17.6	17.8	19.3
Variations with the observer position at spacings:											
S = 1.0H	+ 0.3 / - 0.3				+ 0.4 / - 0.4						
1.5H	+ 0.2 / - 0.3				+ 0.3 / - 0.4						
2.0H	+ 0.5 / - 0.5				+ 0.4 / - 0.3						

CIE Pub.117, 3840 lm Total Lamp Luminous Flux Corrected ( $8\log(F/F_0) = 4.7$ )

C Range: 0 - 360DEG  
C Interval: 5.0DEG  
Test Speed: MEDIUM  
Temperature:25.3DEG  
Operators:  
Test Date:2026-01-17

$\gamma$  Range: 0 - 180DEG  
 $\gamma$  Interval: 0.5DEG  
Test System:EVERFINE GO-2000\_V1 SYSTEM V2.0.406.10  
Humidity:65.0%  
Test Distance:11.700m [K=0.8547]  
Remarks:

## UTILIZATION FACTORS TABLE

Test:U:229.79V I:0.1300A P:28.361W PF:0.9496 Freq:49.99Hz Lamp Flux:3840.09x1 lm		
NAME:	TYPE:	WEIGHT:
SPEC.:	DIM.: 600*203*10	SERIAL No.:
MFR.:	SUR.:0.58*0.122	Shielding Angle:

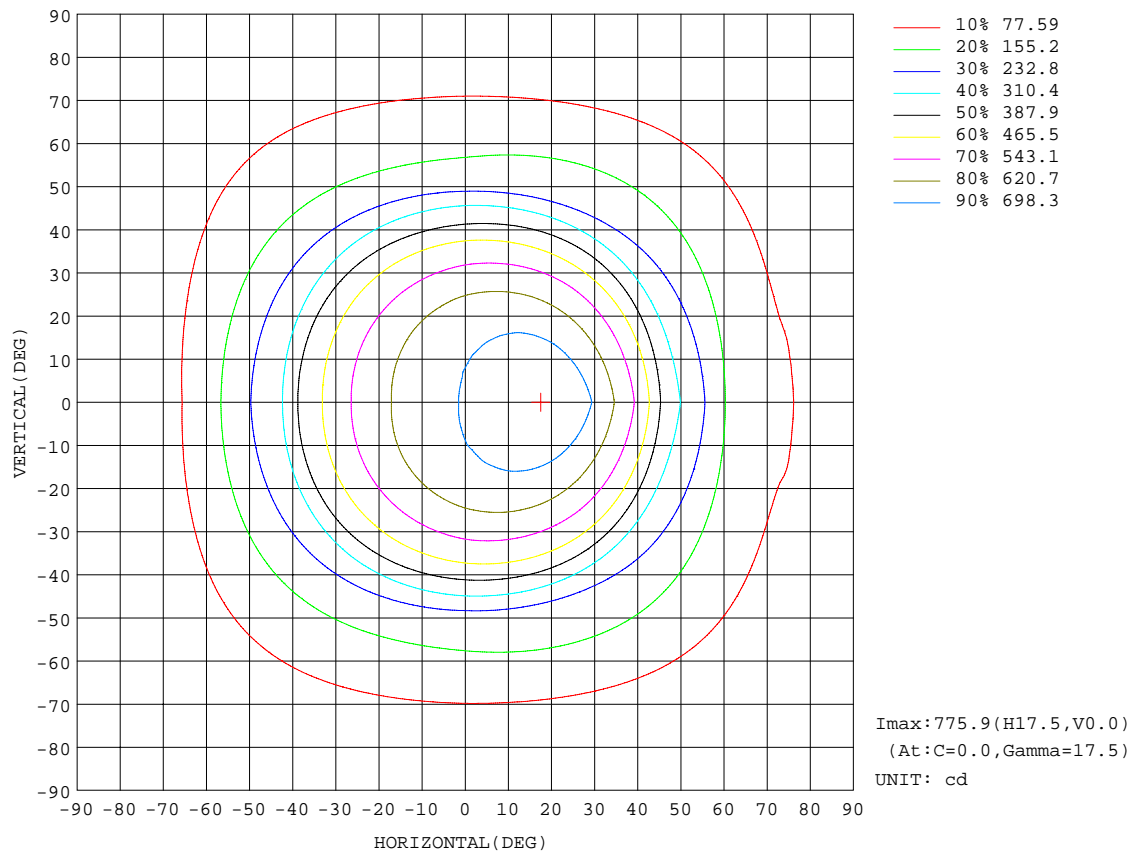
REFLECTANCE										
Ceiling	0.8	0.8	0.8	0.7	0.7	0.7	0.5	0.5	0.5	0
Walls	0.7	0.5	0.3	0.7	0.5	0.3	0.7	0.5	0.3	0
Working plane	0.2	0.2	0.2	0.2	0.2	0.2	0.2	0.2	0.2	0
ROOM INDEX	UTILIZATION FACTORS(PERCENT) $k(RI) \times RCR = 5$									
$k = 0.60$	43	33	27	41	31	26	36	29	24	17
0.80	53	42	35	49	39	33	42	35	30	20
1.00	60	49	42	56	46	40	48	41	35	23
1.25	67	56	49	61	52	46	52	45	40	26
1.50	72	61	54	66	57	51	55	49	44	27
2.00	78	69	62	72	64	58	60	54	50	30
2.50	83	74	68	76	68	63	63	58	54	31
3.00	86	78	72	79	72	67	65	60	57	32
4.00	90	84	79	82	77	73	68	64	61	33
5.00	93	87	83	85	80	76	69	66	64	34
ROOM INDEX	UF(total)									Direct
According to DIN EN 13032-2 2004			Suspended					SHRNOM = 1.25		

C Range: 0 - 360DEG  
C Interval: 5.0DEG  
Test Speed: MEDIUM  
Temperature:25.3DEG  
Operators:  
Test Date:2026-01-17

$\gamma$  Range: 0 - 180DEG  
 $\gamma$  Interval: 0.5DEG  
Test System:EVERFINE GO-2000\_V1 SYSTEM V2.0.406.10  
Humidity:65.0%  
Test Distance:11.700m [K=0.8547]  
Remarks:

## ISOCANDELA DIAGRAM

Test:U:229.79V I:0.1300A P:28.361W PF:0.9496 Freq:49.99Hz Lamp Flux:3840.09x1 lm		
NAME:	TYPE:	WEIGHT:
SPEC.:	DIM.: 600*203*10	SERIAL No.:
MFR.:	SUR.:0.58*0.122	Shielding Angle:



C Range: 0 - 360DEG  
C Interval: 5.0DEG  
Test Speed: MEDIUM  
Temperature:25.3DEG  
Operators:  
Test Date:2026-01-17

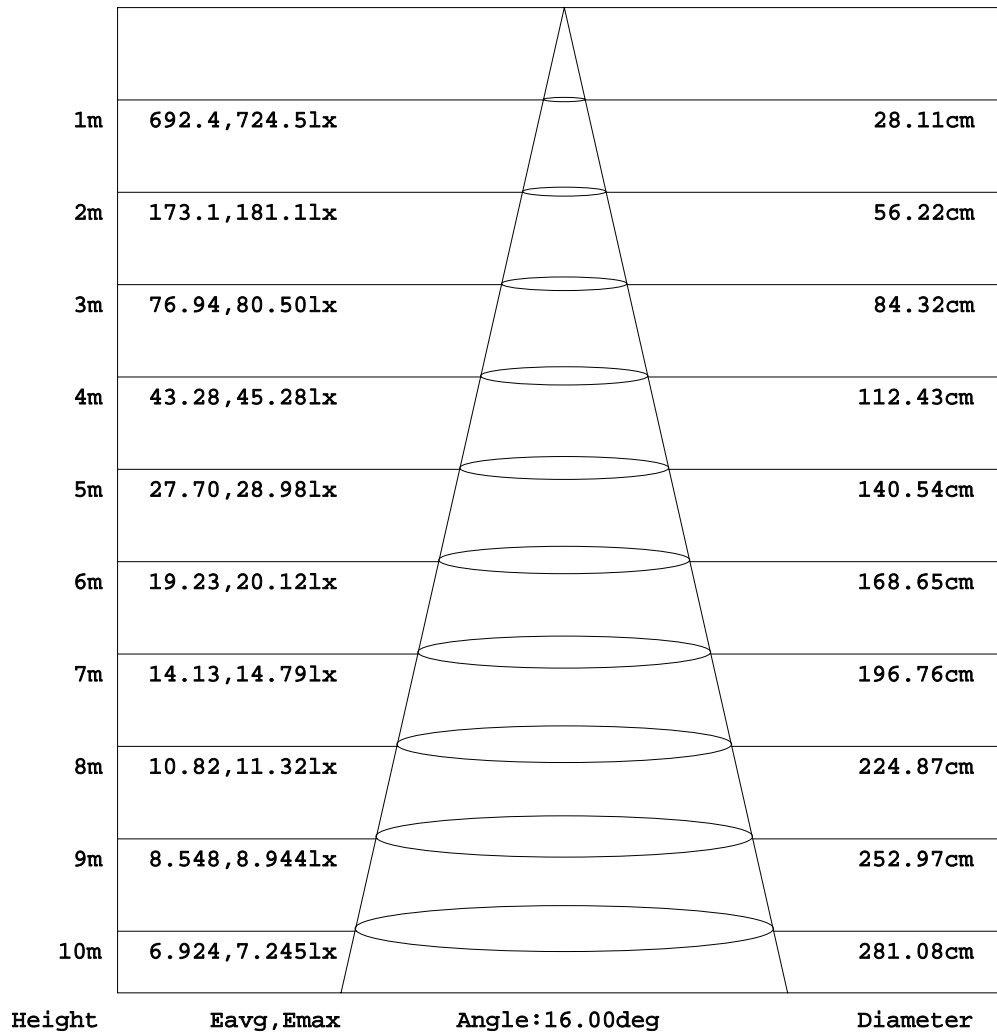
$\gamma$  Range: 0 - 180DEG  
 $\gamma$  Interval: 0.5DEG  
Test System:EVERFINE GO-2000\_V1 SYSTEM V2.0.406.10  
Humidity:65.0%  
Test Distance:11.700m [K=0.8547]  
Remarks:



### AAI Figure

Test:U:229.79V I:0.1300A P:28.361W PF:0.9496 Freq:49.99Hz Lamp Flux:3840.09x1 lm		
NAME:	TYPE:	WEIGHT:
SPEC.:	DIM.: 600*203*10	SERIAL No.:
MFR.:	SUR.:0.58*0.122	Shielding Angle:

Flux out:42.97 lm



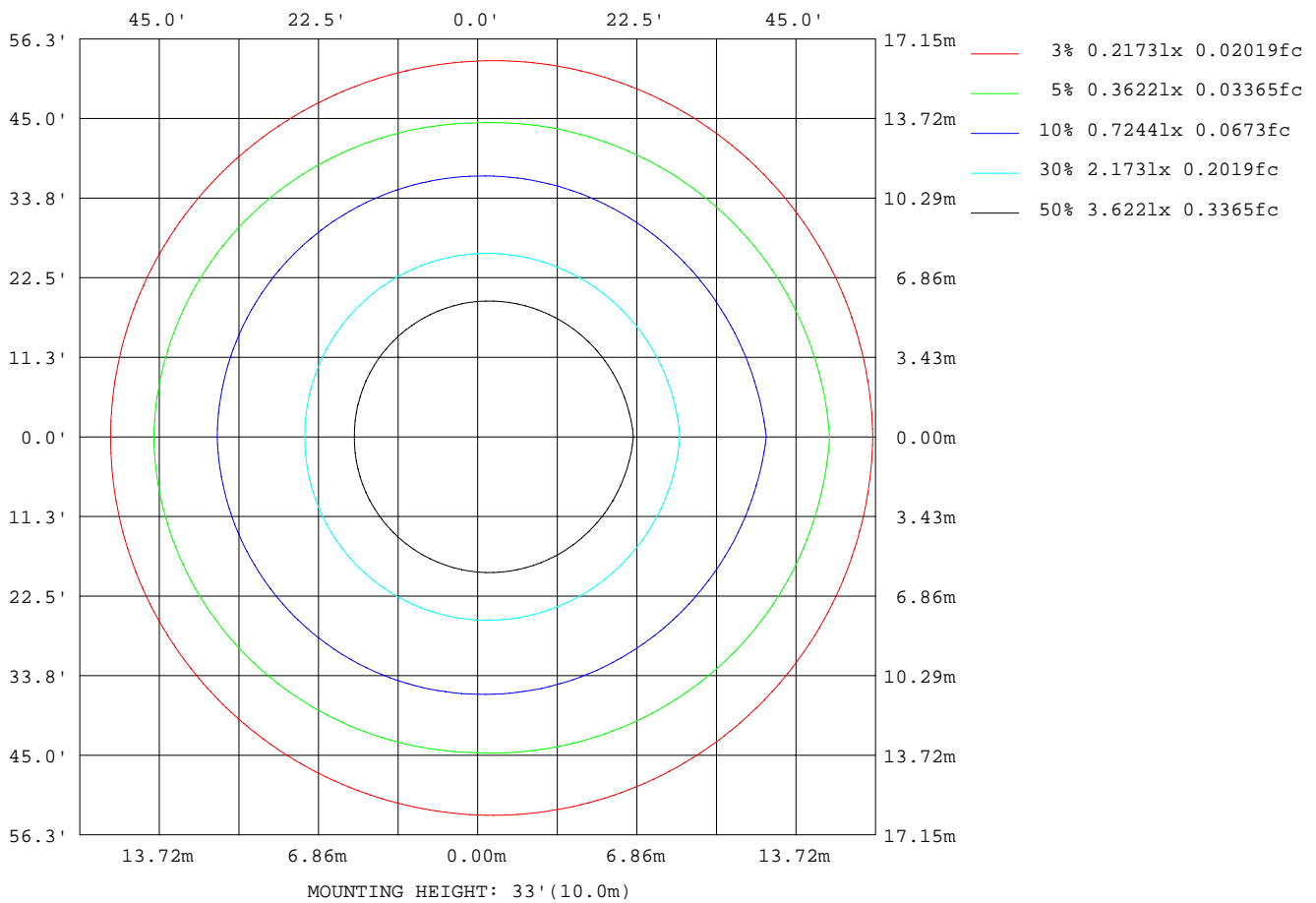
Note:The Curves indicate the illuminated area and the average illumination when the luminaire is at different distance.

C Range: 0 - 360DEG  
C Interval: 5.0DEG  
Test Speed: MEDIUM  
Temperature:25.3DEG  
Operators:  
Test Date:2026-01-17

γ Range: 0 - 180DEG  
γ Interval: 0.5DEG  
Test System:EVERFINE GO-2000\_V1 SYSTEM V2.0.406.10  
Humidity:65.0%  
Test Distance:11.700m [K=0.8547]  
Remarks:

## ISOLUX DIAGRAM

Test:U:229.79V I:0.1300A P:28.361W PF:0.9496 Freq:49.99Hz Lamp Flux:3840.09x1 lm		
NAME:	TYPE:	WEIGHT:
SPEC.:	DIM.: 600*203*10	SERIAL No.:
MFR.:	SUR.:0.58*0.122	Shielding Angle:



C Range: 0 - 360DEG  
C Interval: 5.0DEG  
Test Speed: MEDIUM  
Temperature: 25.3DEG  
Operators:  
Test Date: 2026-01-17

$\gamma$  Range: 0 - 180DEG  
 $\gamma$  Interval: 0.5DEG  
Test System: EVERFINE GO-2000\_V1 SYSTEM V2.0.406.10  
Humidity: 65.0%  
Test Distance: 11.700m [K=0.8547]  
Remarks:

## LED Avg.L Report

Test:U:229.79V I:0.1300A P:28.361W PF:0.9496 Freq:49.99Hz Lamp Flux:3840.09x1 lm		
NAME:	TYPE:	WEIGHT:
SPEC.:	DIM.: 600*203*10	SERIAL No.:
MFR.:	SUR.:0.58*0.122	Shielding Angle:

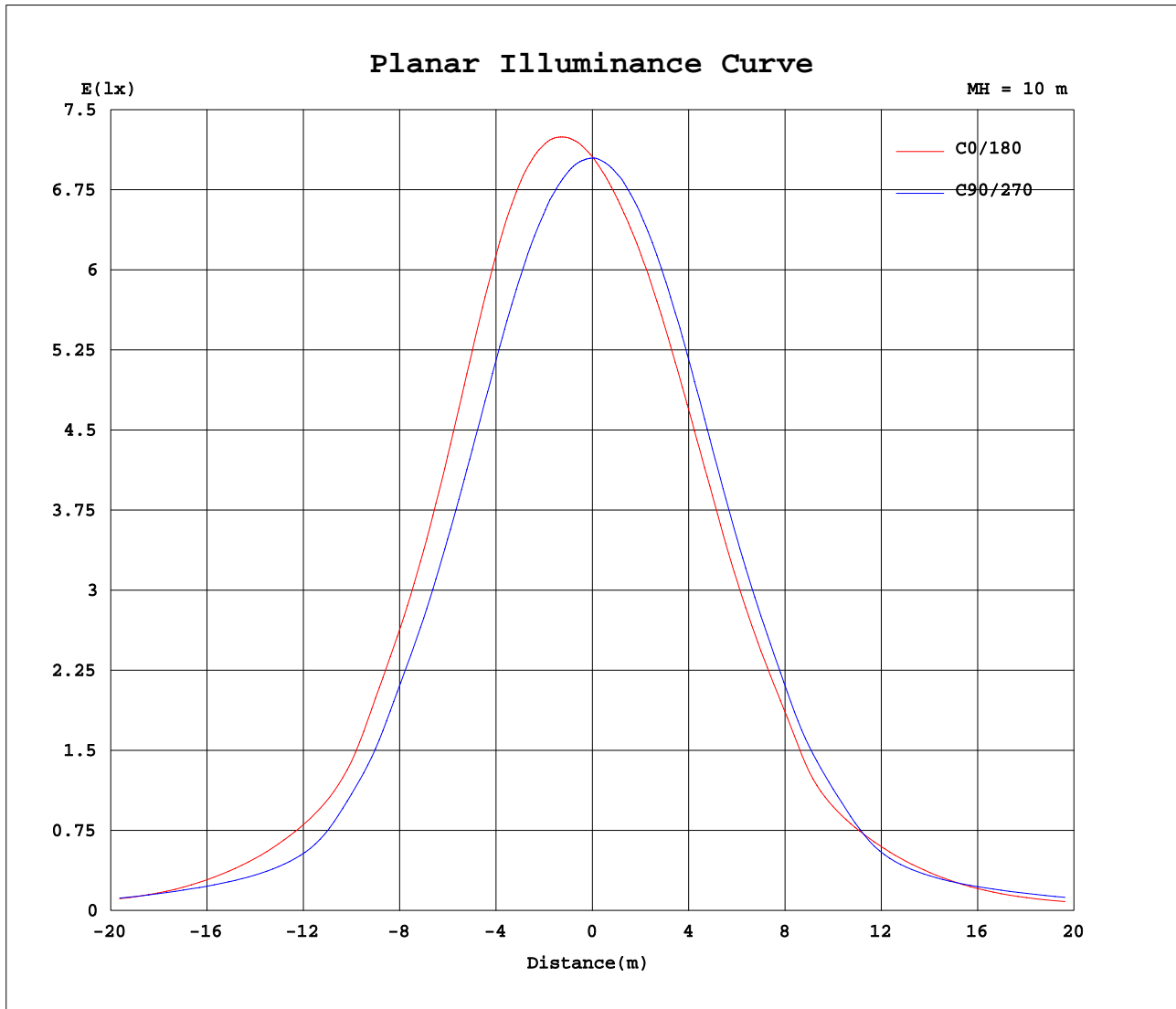
AvgL	cd/m2
L_0~180(65)av	3029
L_0~180(75)av	3943
L_0~180(85)av	4790
L_90~270(65)av	3878
L_90~270(75)av	3197
L_90~270(85)av	4318
L_45(65)av	3537
L_45(75)av	3453
L_45(85)av	4443

Standard: GB/T 29293-2012

C Range: 0 - 360DEG  
C Interval: 5.0DEG  
Test Speed: MEDIUM  
Temperature:25.3DEG  
Operators:  
Test Date:2026-01-17

γ Range: 0 - 180DEG  
γ Interval: 0.5DEG  
Test System:EVERFINE GO-2000\_V1 SYSTEM V2.0.406.10  
Humidity:65.0%  
Test Distance:11.700m [K=0.8547]  
Remarks:

## Planar Illuminance Curve



C Range: 0 - 360DEG  
C Interval: 5.0DEG  
Test Speed: MEDIUM  
Temperature: 25.3DEG  
Operators:  
Test Date: 2026-01-17

$\gamma$  Range: 0 - 180DEG  
 $\gamma$  Interval: 0.5DEG  
Test System: EVERFINE GO-2000\_V1 SYSTEM V2.0.406.10  
Humidity: 65.0%  
Test Distance: 11.700m [K=0.8547]  
Remarks:

## LUMINOUS DISTRIBUTION INTENSITY DATA

Test:U:229.79V I:0.1300A P:28.361W PF:0.9496 Freq:49.99Hz Lamp Flux:3840.09x1 lm		
NAME:	TYPE:	WEIGHT:
SPEC.:	DIM.: 600*203*10	SERIAL No.:
MFR.:	SUR.:0.58*0.122	Shielding Angle:

Table--1

UNIT: cd

C(DEC) γ (DEC)	0	5	10	15	20	25	30	35	40	45	50	55	60	65	70	75	80	85	90
0	706	706	706	706	705	705	705	705	705	705	705	705	705	705	705	705	705	705	705
5	731	729	728	726	724	723	721	719	718	716	715	713	712	710	709	707	706	704	703
10	756	752	748	744	741	737	734	730	727	724	720	717	714	711	708	705	702	699	697
15	773	767	761	755	749	744	738	733	727	722	717	713	708	703	699	694	690	686	682
20	773	765	757	750	742	735	728	721	714	707	701	695	689	683	677	672	666	661	656
25	746	737	728	719	711	703	695	687	680	672	665	658	652	645	639	633	627	622	616
30	690	681	673	664	656	649	641	633	626	619	612	605	599	593	587	581	575	569	564
35	614	606	598	591	583	576	569	562	555	549	543	536	530	525	519	514	508	503	499
40	529	521	513	506	498	491	484	478	471	465	458	452	447	441	436	430	425	420	416
45	395	389	383	377	371	366	360	355	350	345	340	336	331	327	323	319	315	312	308
50	309	300	291	283	275	268	261	254	248	242	236	231	226	222	218	215	211	209	206
55	241	235	229	223	218	212	207	203	198	194	190	186	182	179	176	174	171	169	167
60	160	159	159	158	158	157	156	156	155	154	153	152	151	150	149	148	147	146	145
65	101	103	105	106	107	109	110	110	111	112	112	113	113	113	113	113	113	112	112
70	82.2	81.9	81.6	81.3	81.0	80.7	80.4	80.1	79.8	79.5	79.2	78.9	78.6	78.2	77.9	77.6	77.3	77.0	76.6
75	79.2	77.4	75.7	74.0	72.5	71.0	69.6	68.3	67.0	65.9	64.8	63.8	62.9	62.1	61.3	60.6	60.1	59.6	59.1
80	58.3	58.0	57.7	57.3	57.0	56.6	56.3	55.9	55.5	55.2	54.8	54.4	54.0	53.6	53.2	52.8	52.4	52.0	51.6
85	34.6	33.8	33.1	32.3	31.6	30.9	30.3	29.6	29.0	28.5	27.9	27.4	27.0	26.5	26.1	25.7	25.4	25.0	24.7
90	10.9	10.5	10.0	9.63	9.23	8.83	8.44	8.07	7.70	7.34	7.00	6.66	6.33	6.01	5.71	5.41	5.12	4.84	4.57
95	143	137	131	125	119	113	107	102	96.6	91.4	86.4	81.5	76.7	72.1	67.6	63.2	59.0	54.9	51.0
100	309	295	281	267	254	241	229	217	205	194	184	174	165	155	147	139	131	124	117
105	461	440	420	400	381	363	346	329	313	298	284	270	257	245	234	223	213	203	195
110	587	563	540	517	496	475	455	436	418	401	384	368	354	340	326	314	303	292	282
115	677	652	627	604	582	560	539	519	500	482	465	449	433	418	405	392	380	369	359
120	713	690	667	645	624	603	584	565	547	530	514	499	484	471	458	446	435	425	415
125	701	680	661	642	624	606	589	573	558	544	530	517	504	493	482	472	463	454	446
130	688	670	653	636	619	604	589	575	561	548	536	524	514	503	494	485	477	469	462
135	681	666	652	638	625	612	599	588	576	565	555	545	536	527	519	511	504	497	491
140	668	656	645	634	623	613	603	594	584	576	567	559	552	544	538	531	525	519	514
145	650	641	632	624	615	607	599	592	585	578	571	564	558	552	547	542	537	532	527
150	616	610	604	598	592	586	581	576	571	566	561	557	552	548	544	540	537	533	530
155	602	597	592	587	582	577	573	568	564	560	556	552	548	545	541	538	535	532	529
160	609	605	600	596	593	589	585	581	578	574	571	568	565	562	559	556	554	551	549
165	603	601	598	595	593	590	588	585	583	581	579	576	574	572	570	568	566	565	563
170	592	591	589	587	586	584	583	582	580	579	577	576	575	574	572	571	570	569	568
175	570	570	569	569	568	568	567	567	566	566	565	565	564	564	564	563	563	562	562
180	551	551	551	551	551	551	551	551	551	551	551	551	551	551	551	551	551	551	551

C Range: 0 - 360DEG  
C Interval: 5.0DEG  
Test Speed: MEDIUM  
Temperature:25.3DEG  
Operators:  
Test Date:2026-01-17

γ Range: 0 - 180DEG  
γ Interval: 0.5DEG  
Test System:EVERFINE GO-2000\_V1 SYSTEM V2.0.406.10  
Humidity:65.0%  
Test Distance:11.700m [K=0.8547]  
Remarks:

## LUMINOUS DISTRIBUTION INTENSITY DATA

Test:U:229.79V I:0.1300A P:28.361W PF:0.9496 Freq:49.99Hz Lamp Flux:3840.09x1 lm		
NAME:	TYPE:	WEIGHT:
SPEC.:	DIM.: 600*203*10	SERIAL No.:
MFR.:	SUR.:0.58*0.122	Shielding Angle:

Table--2

UNIT: cd

C(DEG) γ (DEG)	95	100	105	110	115	120	125	130	135	140	145	150	155	160	165	170	175	180	185
0	705	705	705	705	705	705	705	705	705	705	705	706	706	706	706	706	706	706	706
5	701	700	698	697	695	694	692	691	689	688	687	686	685	684	683	683	682	682	682
10	694	691	688	685	682	679	677	674	672	670	668	666	664	663	662	661	660	659	660
15	678	674	670	666	662	659	655	652	649	646	644	642	640	638	636	635	634	633	634
20	651	646	641	637	632	628	624	621	617	614	611	609	607	605	603	602	601	600	601
25	611	605	600	595	591	586	582	578	575	572	569	566	564	562	560	559	558	557	558
30	558	553	548	543	538	533	529	525	521	518	514	512	509	507	505	504	502	502	503
35	493	488	484	479	475	470	467	463	460	456	454	451	449	447	445	444	443	442	443
40	411	406	402	398	393	390	386	383	380	377	374	372	370	368	367	365	364	364	364
45	305	302	299	296	293	290	288	286	284	282	280	279	278	277	276	275	275	275	276
50	206	206	206	207	207	208	210	211	213	215	217	219	221	223	225	226	228	230	229
55	166	166	165	165	165	166	166	167	167	168	169	170	171	172	173	174	175	176	174
60	143	141	139	137	135	133	131	129	127	126	124	123	121	120	119	118	117	116	117
65	110	108	106	104	102	100	98.1	96.0	94.0	92.0	90.0	88.1	86.4	84.7	83.2	81.9	80.8	79.8	81.4
70	76.1	75.6	75.1	74.6	74.1	73.6	73.2	72.8	72.4	72.0	71.6	71.3	71.1	70.9	70.7	70.6	70.5	70.5	71.1
75	59.1	59.2	59.4	59.6	59.9	60.2	60.6	61.0	61.4	61.8	62.3	62.7	63.2	63.6	64.1	64.5	64.9	65.2	64.8
80	51.0	50.4	49.8	49.3	48.7	48.1	47.6	47.1	46.5	46.0	45.6	45.1	44.7	44.3	43.9	43.6	43.3	43.1	43.2
85	24.5	24.3	24.2	24.0	23.9	23.8	23.8	23.7	23.7	23.7	23.8	23.8	23.9	24.0	24.1	24.2	24.3	24.5	24.6
90	4.26	3.97	3.68	3.41	3.15	2.91	2.68	2.46	2.27	2.09	1.93	1.79	1.67	1.57	1.49	1.44	1.41	1.40	1.55
95	46.7	42.6	38.6	34.8	31.1	27.7	24.4	21.4	18.5	15.9	13.4	11.3	9.33	7.65	6.22	5.07	4.20	3.61	4.29
100	112	107	102	97.8	94.0	90.6	87.6	85.0	82.7	80.8	79.3	78.0	77.2	76.6	76.3	76.3	76.6	77.1	76.6
105	189	183	178	174	171	168	165	163	162	161	160	160	160	161	161	162	164	165	164
110	275	269	263	259	255	251	249	246	245	244	243	243	243	244	245	246	248	249	247
115	352	346	340	335	331	328	325	323	322	321	321	321	321	322	323	324	326	328	326
120	409	403	398	394	391	388	386	384	383	383	382	383	383	384	385	387	389	390	388
125	441	436	433	429	427	425	423	422	421	421	421	422	423	424	425	426	428	430	427
130	458	454	451	448	446	444	443	442	442	442	442	443	444	445	446	447	449	451	448
135	486	482	479	475	473	470	468	467	465	464	464	463	463	463	464	464	465	466	464
140	510	506	502	499	496	493	491	489	487	485	484	483	482	482	482	482	482	482	481
145	523	520	516	513	510	508	505	503	501	500	498	497	496	495	495	494	494	494	494
150	527	524	521	518	516	513	511	509	507	506	504	503	502	501	500	500	499	499	499
155	526	524	521	519	517	515	513	511	510	508	507	506	505	504	504	503	503	503	503
160	547	544	542	540	538	536	535	533	532	530	529	528	527	526	526	525	525	525	525
165	561	559	557	555	554	552	551	549	548	547	545	544	543	543	542	541	541	541	541
170	566	565	564	562	561	560	559	558	557	556	555	554	553	553	552	552	551	551	551
175	561	561	560	560	560	559	559	558	558	558	557	557	557	556	556	556	556	556	556
180	551	551	551	551	551	551	551	551	551	551	551	551	551	551	551	551	551	551	551

C Range: 0 - 360DEG  
C Interval: 5.0DEG  
Test Speed: MEDIUM  
Temperature:25.3DEG  
Operators:  
Test Date:2026-01-17

γ Range: 0 - 180DEG  
γ Interval: 0.5DEG  
Test System:EVERFINE GO-2000\_V1 SYSTEM V2.0.406.10  
Humidity:65.0%  
Test Distance:11.700m [K=0.8547]  
Remarks:

## LUMINOUS DISTRIBUTION INTENSITY DATA

Test:U:229.79V I:0.1300A P:28.361W PF:0.9496 Freq:49.99Hz Lamp Flux:3840.09x1 lm		
NAME:	TYPE:	WEIGHT:
SPEC.:	DIM.: 600*203*10	SERIAL No.:
MFR.:	SUR.:0.58*0.122	Shielding Angle:

Table--3

UNIT: cd

C(DEG) γ (DEG)	190	195	200	205	210	215	220	225	230	235	240	245	250	255	260	265	270	275	280
0	706	706	706	706	706	705	705	705	705	705	705	705	705	705	705	705	705	705	705
5	682	683	684	685	685	686	687	689	690	691	693	694	695	697	699	700	702	703	705
10	660	661	662	664	665	667	669	671	673	675	678	680	683	686	689	692	695	698	700
15	635	636	637	639	641	643	646	648	651	654	658	661	665	669	673	677	681	685	689
20	602	603	605	607	609	612	615	618	621	625	629	633	638	642	647	652	657	662	667
25	559	560	562	564	567	570	573	576	580	584	588	592	597	602	607	613	618	624	629
30	504	505	507	509	512	515	518	522	526	530	534	539	543	549	554	559	565	570	576
35	445	446	448	450	453	455	458	462	465	469	473	478	482	487	492	497	502	507	512
40	365	366	368	369	371	373	376	379	382	385	388	392	396	400	405	409	414	419	424
45	277	279	280	282	284	287	289	292	295	297	301	304	307	311	314	318	322	325	328
50	227	226	224	222	221	219	218	216	215	214	213	212	211	211	211	211	211	214	216
55	173	172	171	169	168	167	166	165	164	163	163	162	162	162	162	162	163	165	167
60	117	119	120	121	122	124	126	127	129	131	133	135	137	139	140	142	144	145	147
65	83.1	85.1	87.1	89.4	91.7	94.1	96.6	99.1	102	104	107	109	112	114	116	118	120	121	121
70	71.7	72.4	73.1	73.8	74.6	75.4	76.2	77.1	77.9	78.8	79.6	80.4	81.3	82.0	82.8	83.5	84.2	84.5	84.8
75	64.3	63.8	63.3	62.8	62.2	61.7	61.2	60.7	60.2	59.7	59.3	58.9	58.6	58.3	58.1	58.0	58.0	58.4	58.9
80	43.2	43.4	43.6	43.8	44.0	44.3	44.6	44.9	45.3	45.7	46.1	46.6	47.0	47.5	48.0	48.5	49.0	49.4	49.9
85	24.7	24.9	25.1	25.2	25.4	25.6	25.9	26.1	26.3	26.6	26.8	27.1	27.4	27.6	27.9	28.2	28.5	28.8	29.1
90	1.73	1.93	2.15	2.38	2.64	2.91	3.20	3.50	3.81	4.14	4.47	4.81	5.15	5.50	5.85	6.20	6.55	6.81	7.07
95	5.25	6.50	8.01	9.78	11.8	14.1	16.6	19.3	22.2	25.3	28.7	32.2	35.9	39.7	43.8	47.9	52.2	56.2	60.2
100	76.4	76.4	76.7	77.4	78.3	79.5	81.1	83.0	85.3	88.0	91.0	94.4	98.3	103	107	112	118	125	132
105	162	161	160	160	160	160	160	161	163	165	167	170	174	178	183	188	194	203	212
110	246	244	243	242	242	242	242	243	245	247	249	252	256	261	266	272	279	289	300
115	324	322	320	319	319	318	318	319	320	322	324	327	331	336	341	347	354	364	375
120	386	384	382	381	380	379	379	379	380	381	383	385	388	392	397	402	409	418	428
125	425	423	421	420	418	417	417	416	416	417	418	420	422	425	429	433	438	446	455
130	446	444	443	441	440	439	438	437	437	438	438	440	442	444	447	450	455	462	469
135	463	462	462	461	461	461	461	462	463	464	466	468	470	473	477	481	485	491	498
140	481	480	480	480	480	481	482	483	484	486	488	490	493	496	499	503	508	513	519
145	494	494	494	495	495	496	498	499	501	503	505	507	510	513	516	520	524	528	533
150	499	499	500	501	501	502	504	505	506	508	510	512	515	517	520	523	526	529	533
155	503	503	504	504	505	506	507	509	510	512	513	515	517	520	522	525	527	530	533
160	525	526	526	527	528	529	530	531	532	534	536	537	539	541	544	546	548	551	553
165	541	542	542	543	544	545	546	547	548	550	551	553	554	556	558	560	562	564	565
170	551	552	552	553	553	554	555	556	557	558	559	560	561	562	563	565	566	567	568
175	556	556	556	556	556	556	556	557	557	557	558	558	558	559	559	559	560	560	561
180	551	551	551	551	551	551	551	551	551	551	551	551	551	551	551	551	551	551	551

C Range: 0 - 360DEG  
C Interval: 5.0DEG  
Test Speed: MEDIUM  
Temperature:25.3DEG  
Operators:  
Test Date:2026-01-17

γ Range: 0 - 180DEG  
γ Interval: 0.5DEG  
Test System:EVERFINE GO-2000\_V1 SYSTEM V2.0.406.10  
Humidity:65.0%  
Test Distance:11.700m [K=0.8547]  
Remarks:

## LUMINOUS DISTRIBUTION INTENSITY DATA

Test:U:229.79V I:0.1300A P:28.361W PF:0.9496 Freq:49.99Hz Lamp Flux:3840.09x1 lm																	
NAME:									TYPE:						WEIGHT:		
SPEC.:									DIM.: 600*203*10						SERIAL No.:		
MFR.:									SUR.:0.58*0.122						Shielding Angle:		

Table--4

UNIT: cd

C(DEG) γ (DEG)	285	290	295	300	305	310	315	320	325	330	335	340	345	350	355				
0	705	705	705	705	705	705	705	705	705	705	705	705	706	706	706				
5	706	708	709	711	712	714	715	717	719	720	722	724	725	727	729				
10	703	706	709	712	716	719	722	726	729	733	736	740	744	748	752				
15	693	698	702	707	712	716	722	727	732	737	743	749	755	761	767				
20	672	678	684	689	695	702	708	714	721	728	735	742	750	758	765				
25	635	641	647	653	660	667	674	681	688	696	704	712	720	728	737				
30	582	588	594	600	606	613	620	627	634	641	649	657	665	673	681				
35	517	522	528	534	539	545	552	558	564	571	578	585	592	599	607				
40	429	434	440	445	451	457	463	470	477	483	491	498	505	513	521				
45	332	336	339	343	347	351	355	359	363	368	372	376	381	386	390				
50	220	223	227	231	236	240	246	251	257	264	270	277	285	292	301				
55	170	173	176	179	183	187	191	195	200	205	211	216	222	228	235				
60	148	149	150	151	152	153	154	155	155	156	157	158	158	159	159				
65	121	121	121	120	120	119	118	117	116	114	112	111	109	106	104				
70	85.0	85.1	85.2	85.3	85.3	85.3	85.2	85.0	84.8	84.6	84.3	84.0	83.6	83.2	82.7				
75	59.5	60.2	61.0	61.9	62.8	63.9	65.0	66.2	67.5	68.9	70.4	72.0	73.7	75.4	77.3				
80	50.3	50.8	51.2	51.7	52.2	52.7	53.2	53.8	54.3	54.8	55.4	56.0	56.5	57.1	57.7				
85	29.4	29.7	30.0	30.3	30.7	31.0	31.3	31.7	32.0	32.4	32.7	33.1	33.5	33.8	34.2				
90	7.33	7.58	7.84	8.09	8.34	8.58	8.83	9.07	9.31	9.54	9.78	10.0	10.2	10.5	10.7				
95	64.4	68.8	73.2	77.8	82.5	87.4	92.3	97.5	103	108	114	119	125	131	137				
100	139	147	156	165	174	184	195	206	217	229	241	254	267	281	295				
105	222	233	245	257	270	283	298	313	329	346	363	381	400	419	440				
110	311	324	337	351	366	382	399	416	435	454	474	495	517	539	563				
115	387	400	414	429	445	461	479	497	516	536	558	580	603	627	651				
120	439	452	464	478	493	509	525	543	561	580	600	621	643	665	689				
125	464	474	485	497	510	523	537	552	568	585	602	620	639	659	679				
130	478	487	497	507	518	530	543	556	570	585	600	617	633	651	669				
135	506	513	522	531	540	550	561	572	584	596	609	622	636	651	666				
140	525	532	539	546	554	562	571	580	590	600	610	621	632	644	656				
145	538	544	549	555	562	568	575	582	590	597	605	614	622	631	641				
150	536	540	545	549	553	558	563	568	573	579	585	591	597	603	609				
155	536	540	543	547	551	554	559	563	567	572	577	581	586	592	597				
160	556	558	561	564	567	571	574	577	581	585	588	592	596	600	605				
165	567	569	571	573	576	578	580	582	585	587	590	592	595	598	601				
170	570	571	572	573	575	576	578	579	581	582	584	585	587	589	590				
175	561	562	562	563	563	564	564	565	566	566	567	567	568	569	570				
180	551	551	551	551	551	551	551	551	551	551	551	551	551	551	551				

C Range: 0 - 360DEG  
C Interval: 5.0DEG  
Test Speed: MEDIUM  
Temperature:25.3DEG  
Operators:  
Test Date:2026-01-17

γ Range: 0 - 180DEG  
γ Interval: 0.5DEG  
Test System:EVERFINE GO-2000\_V1 SYSTEM V2.0.406.10  
Humidity:65.0%  
Test Distance:11.700m [K=0.8547]  
Remarks: